

ASSEMBLY INSTRUCTIONS

SPACER DAMPER

Single Frame with Break-away Head Cap

AI 068

1. Check the article number and the conductor range on the product with your conductor being used.



2. Unfasten the clamp bolts so that the threaded part of the bolt on the top of the clamp is flush with the nut. The clamp is now opened enough so that the conductor fits into the clamp.



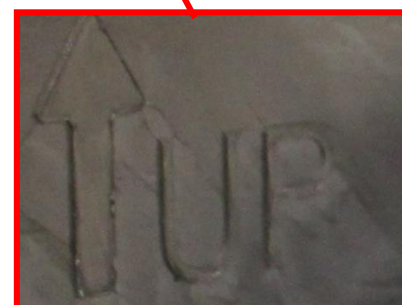
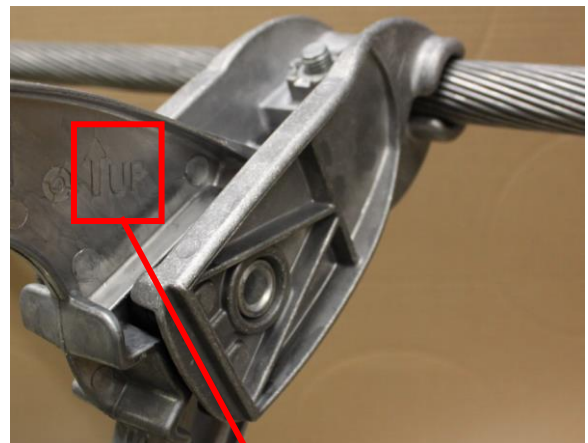
3. Make sure that the sub-conductor strands are not damaged or birdcaged at the installation point.

Check that the spacer damper to be installed is clean and devoid of surface damages that can create Corona problems.

The correct orientation of the spacer "↑UP" is marked on the main frame.

Brush the sub-conductor at the installation point, just before the installation of the spacer damper clamp, to clean it and to improve the electrical connection.

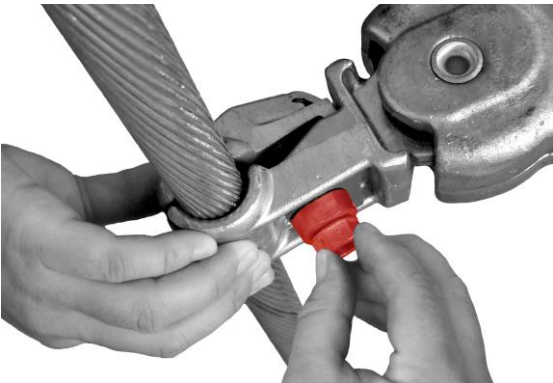
Put all sub-conductors into the assigned clamps.



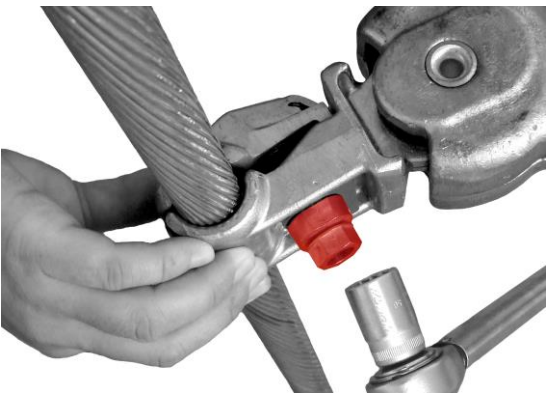
REV.	-	09-11-2020 / ISB		LANGUAGE	PAGE
				EN	1 of 3

ASSEMBLY INSTRUCTIONS		AI 068
SPACER DAMPER Single Frame with Break-away Head Cap		

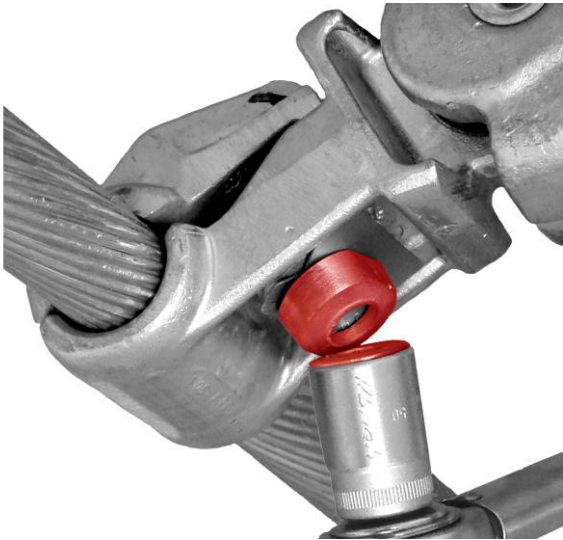
4. Tighten each bolt as much as possible by hand in order to fix the spacer damper in its position.



5. Complete the bolt tightening applying a socket (ratchet) wrench to the upper head of the break-away cap. Be careful to apply only a torque, and not a bending load, onto the cap.



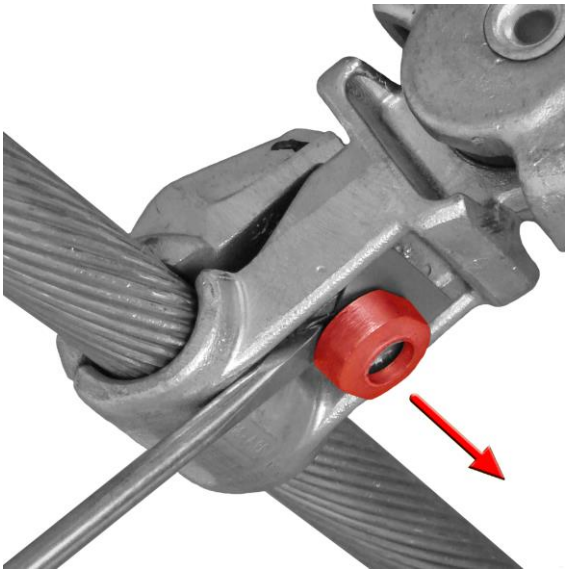
6. The upper head of the break-away cap is designed to be detached at a torque of 45 Nm \pm 10%.



REV.	-	09-11-2020 / ISB	LANGUAGE	PAGE
			EN	2 of 3

ASSEMBLY INSTRUCTIONS		AI 068
SPACER DAMPER Single Frame with Break-away Head Cap		

7. Remove the lower part of the break-away cap from the bolt head by means of a screwdriver.



8. Once the lower part of the cap has been removed, bend the two wings of the safety plate. The wings are oriented in such a way, that one of the two will be in full contact with one of the bolt head sides for any position assumed by the same.

Proceed as follows:
Insert the screwdriver below one of the two tabs of the safety plate.
Bend the tab against the bolt head, at 90 degrees in respect to the as-flat position.
Repeat the above operation with the second tab of the safety plate.



REV.	-	09-11-2020 / ISB	LANGUAGE	PAGE
			EN	3 of 3